
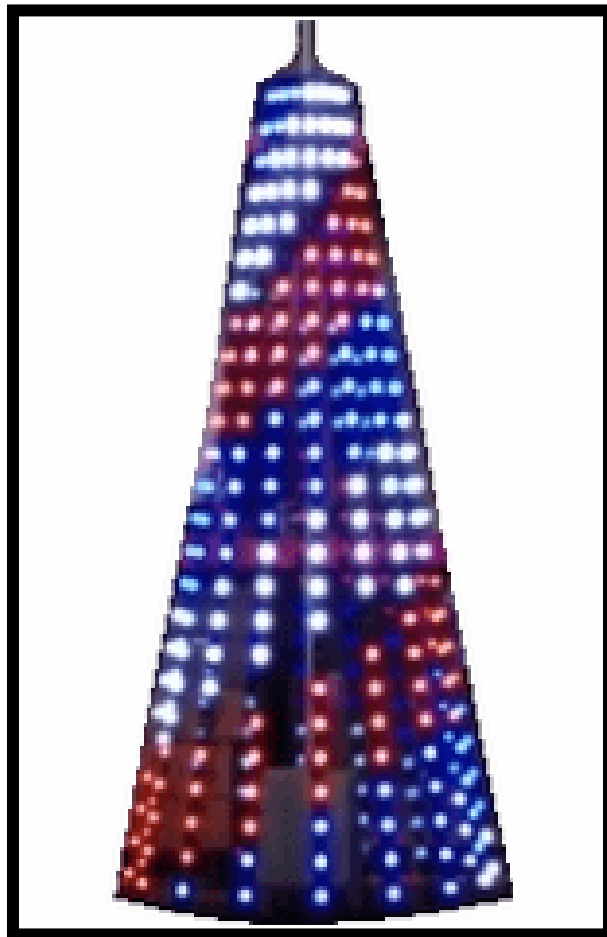


Light--Rama

 www.lightorama.com



Plug-n-Show

16x25 Complete Pixel Tree Kit

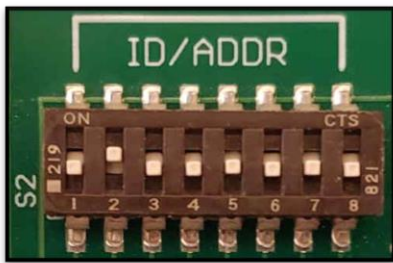
Hardware / Software Configuration

Step 1: Setting the Unit IDs

To use the 16x25 Pixel Tree with any of our store sequences (like the TSO Signature Series package), you'll need to make sure that the Pixie8 in this tree packages is set to Unit IDs 40-47. If you are not using our sequences, you can set it to any non-conflicting Unit IDs relative to your display.

Physically, we recommend setting the Unit IDs of the Pixie8 using the DIP Switches on the controller. With this method, you only need to set the FIRST Unit ID of the controller (40) and everything else will be automatically taken care of behind the scenes. If you're planning to use our sequences, look at the screenshot below of what the DIP switch setting should be for the Pixie8 tree (Starting ID = 40).

DIP Switches– Base ID set at Unit ID 40:

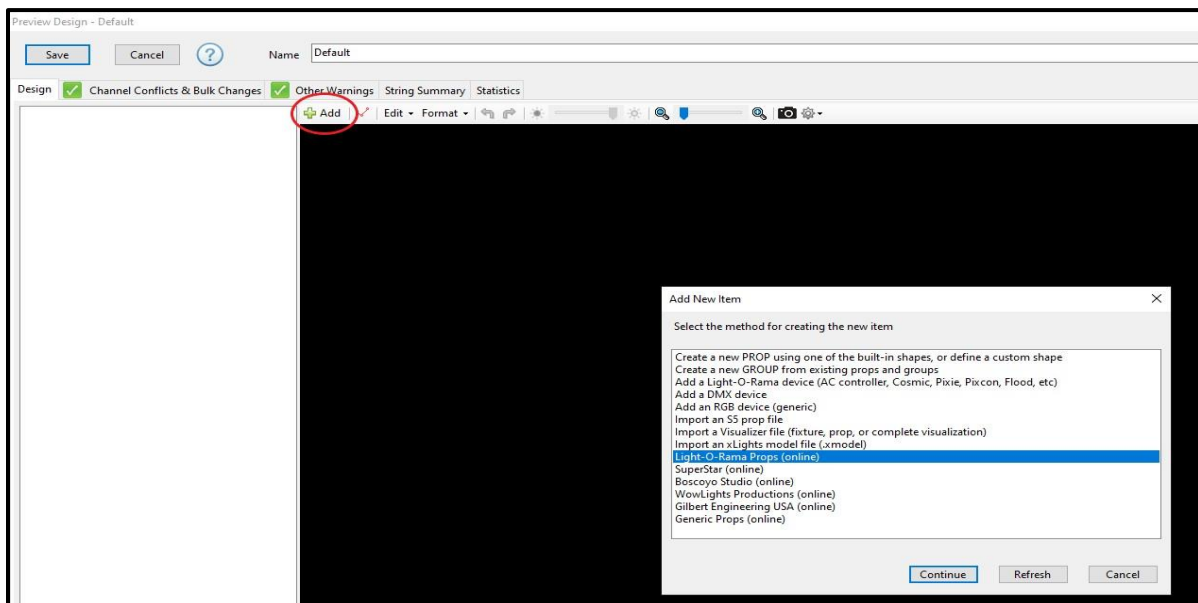


Step 2: Adding the Tree to your Preview (“Virtual Layout”)

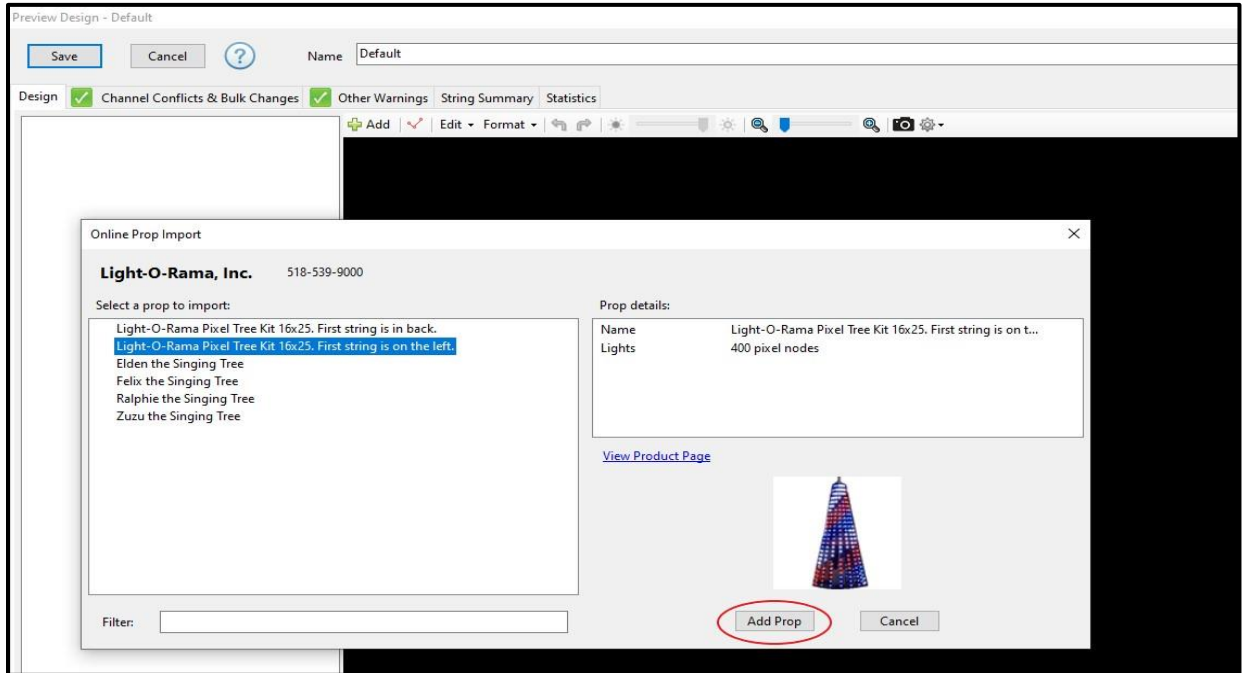
Skip this step if you plan to use our sequence store layout and motion paks, or if you purchased an SD card package (like our TSO Plug-n-Show card). Just import the sequences following the provided instructions after you make your purchase, or insert the SD card into your director, respectively.

If you want to make your own preview (or “virtual layout”), THEN map our sequences over to YOUR display, follow the steps below within the Preview Editor of the Light-O-Rama Sequencer.

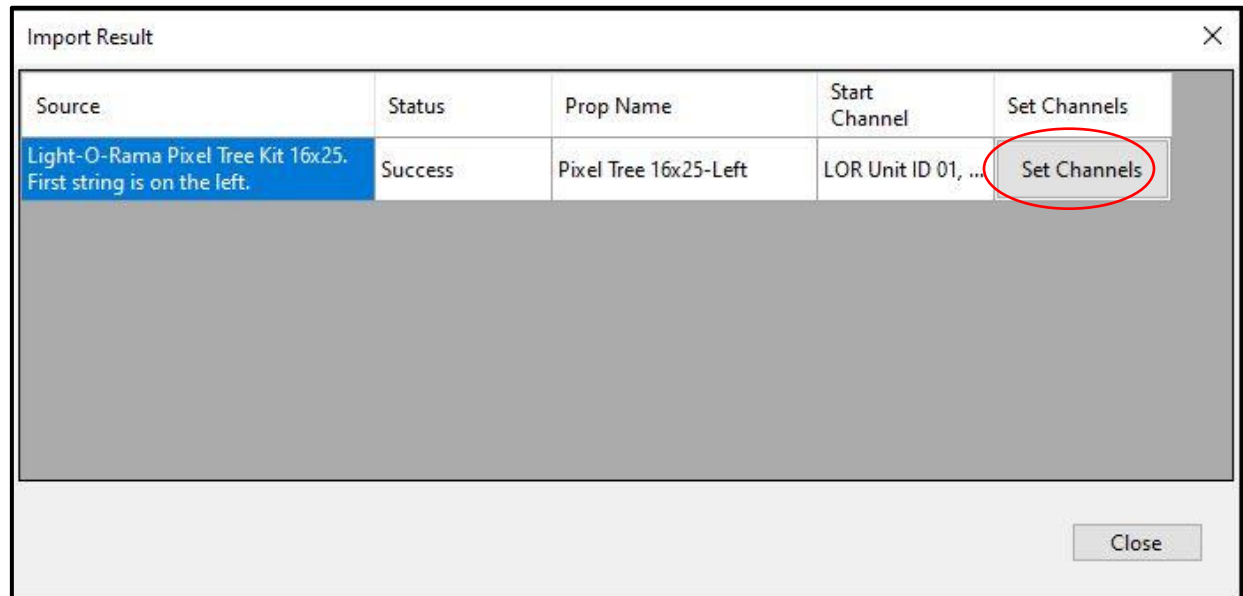
1. Open the “Add” menu of the Preview Editor and select “Light-O-Rama Props (online).”



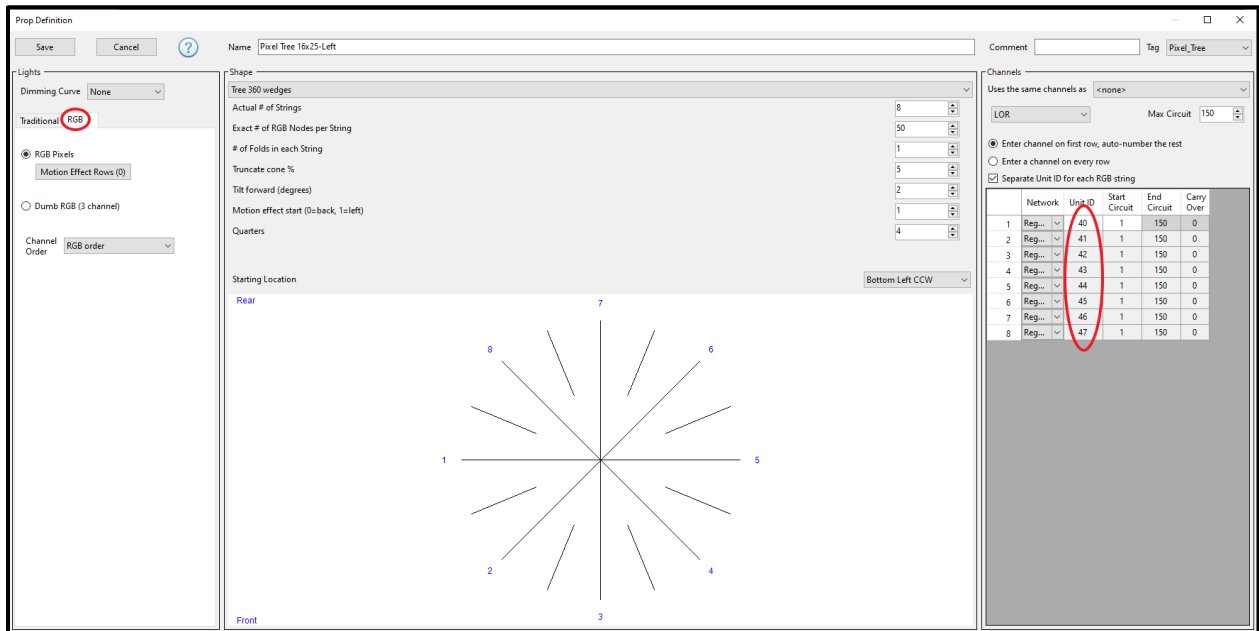
2. Select the Pixel Tree Prop orientation you plan to use from the list and choose “Add Prop.” “First string on the left” should be used for Superstar sequences. “First string in the back” should be used with LOR packages and motion paks. Whichever you choose, make sure to set up the physical prop in the same arrangement.



3. On the “Import Result” screen, click the “Set Channels” button to open the Prop Definition window.



4. Once the prop definition window opens, make sure that the selected tab on the left says “RGB” instead of traditional, and set the Unit IDs on the right to 40-47. Typing 40 in the first row then clicking elsewhere will automatically number the rest.



If you are NOT using our store sequences, you can set the Unit IDs to any eight non-conflicting and sequential Unit IDs relative to your display. You must set the DIP switches (Step 1) accordingly or else your Pixie8 will still be set to Unit ID 40 if you’ve followed these instructions exactly.

Remember that when using a Pixie controller, each port on the Pixie gets its own Unit ID, unlike a standard 16 channel AC controller (where the controller is a Unit ID and each plug is a channel), and that Light-O-Rama uses hexadecimal numbering.

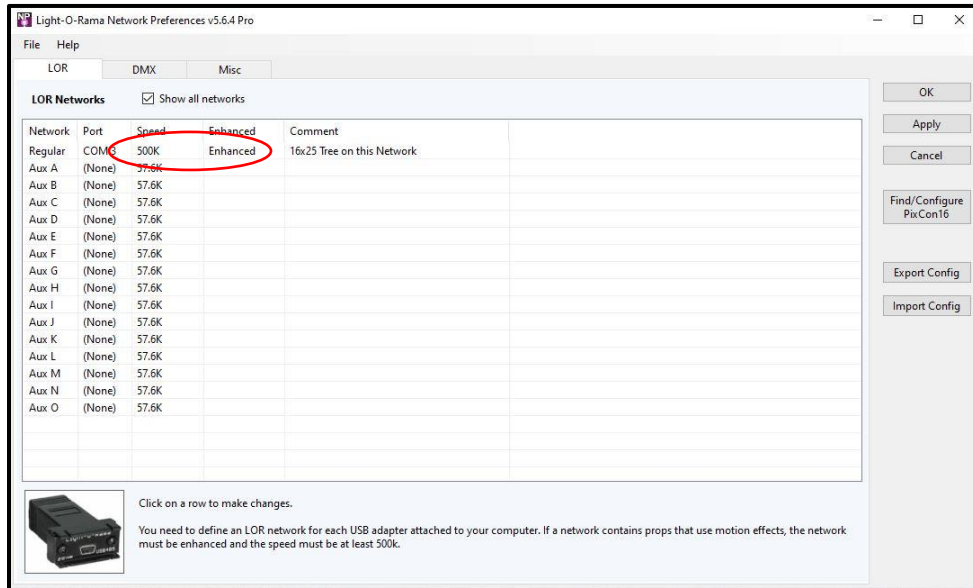
Examples:

- 01, 02, 03, 04, 05, 06, 07, 08
- 06, 07, 08, 09, 0A, 0B, 0C, 0D
- 09, 0A, 0B, 0C, 0D, 0E, 0F, 0E
- 40, 41, 42, 43, 44, 45, 46, 47

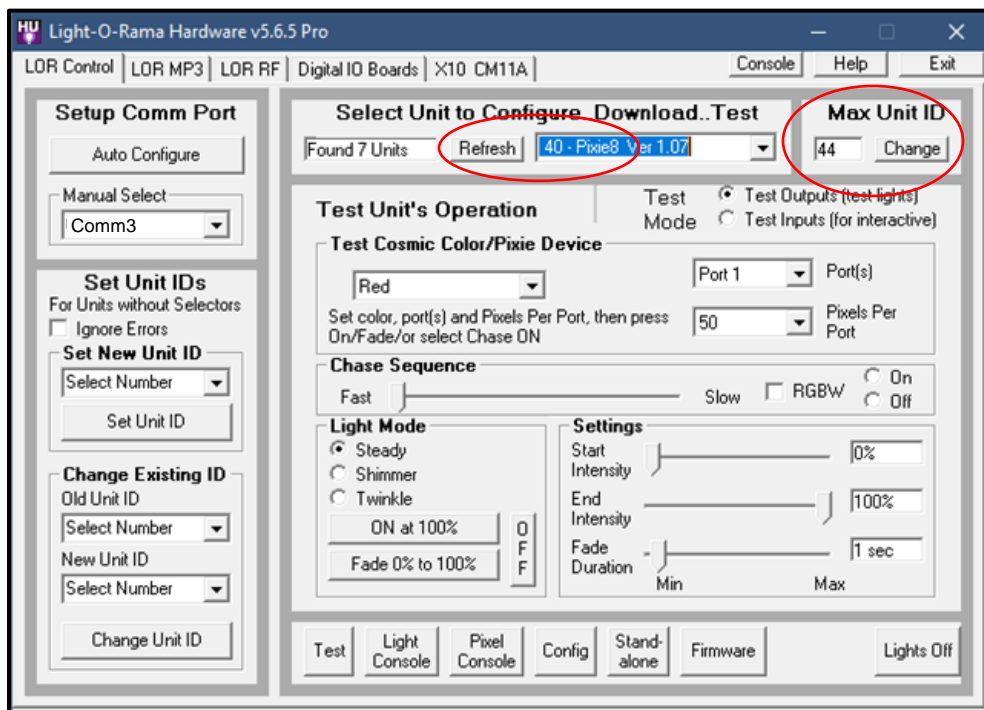
If you are using our store sequences and not making assignment alterations (recommended), you MUST set the IDs of the Pixie8 to 40-47 in the Preview.

Step 3a: Computer-Based Show Configuration

If you plan to play your show for the season through a **computer**, be sure to set your network preferences to match. Each connected USB485 adapter is one network. The Pixel Tree must be on an “Enhanced” Network at 500k speed. If you are using our store sequences, the Pixel Tree should be on the “Regular” network, usually Comm 3.



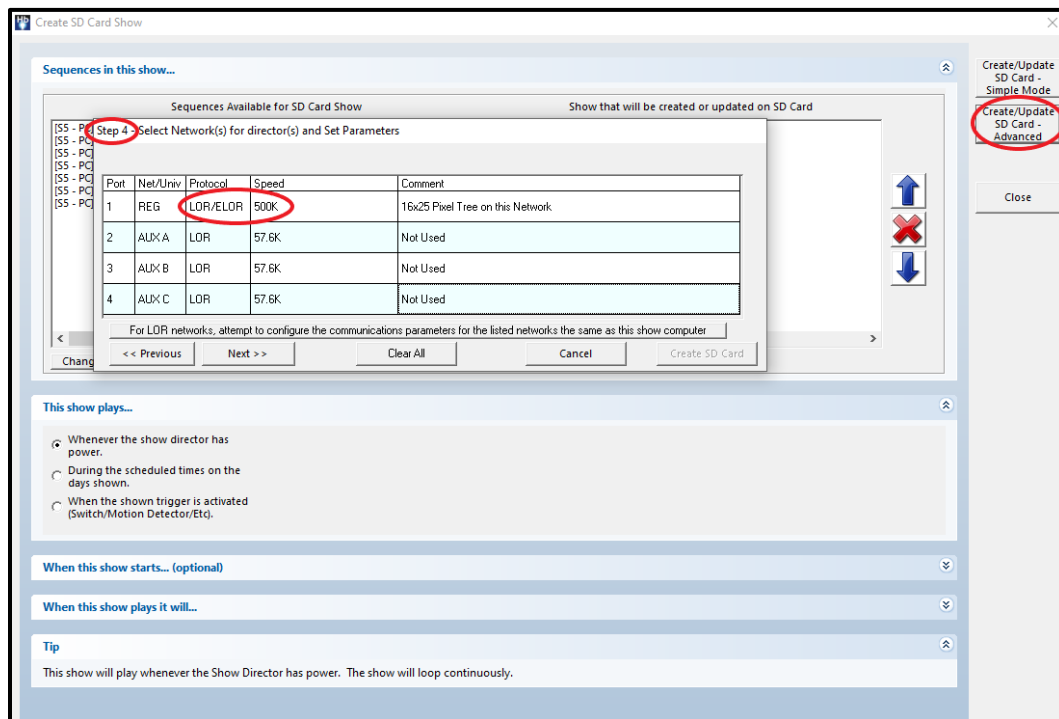
Once all your controllers are daisy chained and connected to your computer with a USB485-HS adapter, follow the standard procedure to locate your controllers in the Hardware Utility. The Pixie8 controller will appear with a base Unit ID of 40 if you’ve set up your tree for use with our sequences. If you cannot locate the controller, check to make sure your max Unit ID is greater than 40 before you press “refresh.”



Step 3b: Showtime Director Show Configuration

If you purchased one of our SD card packages (like our TSO Plug-n-Show card), all you need to do is insert the SD card after setting the correct Unit ID assignments (*skip this step*).

If you purchased store sequences individually or created your own sequences and plan to use a **Showtime Director**, you will need to use the Light-O-Rama Hub's SD Card Builder to create your playlist. Once you have all your sequences chosen and added to your playlist (like you would do when setting up any show), be sure to use the Advanced builder and set your network to LOR/ELOR ("Enhanced Light-O-Rama") at 500k speed once you reach step 4.



If everything in your display is working except the pixel tree / other pixel props, this is likely the step that went wrong. Please try re-building your SD card and confirm the Network is set to ELOR and the speed is 500k. You cannot put (old) Gen 1 or Gen 2 AC controllers on an enhanced network with your Pixie controllers.