

Light-O-Rama



Pixie4

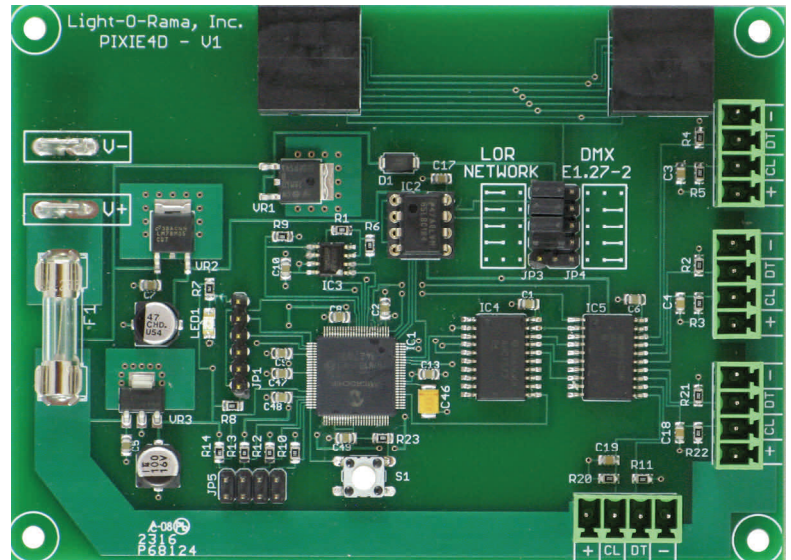
ShowTime

Cosmic Color Pixie4

Controller for 4 Strings of 100 Pixels

www.lightorama.com

- 4 string smart pixel controller
- Up to 100 pixels per string
- Each pixel's color and brightness is individually controllable
- Simple LOR network connectivity; no LAN required. LOR network speeds to 1Mbit
- Appears in the software as 4 unit IDs with up to 100 pixels/unit ID (300 channels per Unit ID)
- Supports legacy mode which makes each string behave like a CCR or single string CCB. Supports all features of these devices (color effects and macros)
- Handles up to 15 amps
- One fuse for all strings
- Three inputs for interactive shows
- Stand alone program storage for independent operation
- Test button runs red, green and blue down the pixels strings for simple verification of your connections and pixel strings
- Supports all Light-O-Rama pixel ICs. Currently, WS2811 400KHz, WS2811 800KHz, WS2812, WS2801, LDP6803 & SM16716. More to be added.
- 5VDC or 12VDC pixels
- Plug in screw terminal connectors provided for each string



Pixie4

The Pixie4 is an economical, smart pixel controller designed for distributed pixel placement. It controls up to 400 smart RGB pixels over a standard LOR network.

The Pixie4 can be used with older sequences which do not use Enhanced Pixel protocol. It also supports Enhanced Pixel protocol for use with all the latest pixel support capabilities of S4.

Sequences already written for the CCR and CCB controllers can be used with this controller by changing the Unit IDs to align with the Pixie4.

The controller is assigned one unit ID, which is the base unit ID. This unit ID controls pixel string #1. It responds to successive unit IDs to control pixel strings 2-4.

The controller is supplied with 4 screw terminal plugs. The pixels strings are connected to these plugs which are then pushed into the connectors on the board. This arrangement simplifies artifact storage, assembly and damaged component replacement.



Complete systems including a Pixie4, power supply, weatherproof plastic case and 4 ribbon, bulb or pixel strings will be available with a system discount. Included, of course, is the Light-O-Rama Showtime two year warranty on all components.

Specifications

Configuration	4 strings of up to 100 smart pixels
Current	15 amps for all strings
Voltage	5 VDC or 12 VDC pixels
Operating Temp	-20° F to 140° F
Controller dimensions	7 ⁷ / ₈ "L x 4 ³ / ₄ " W x 1"H

Imagine it, then do it

Light-O-Rama, Inc.
Tel: (518) 539-9000 Fax (518) 538-0067
helpdesk.lightorama.com