

Light-O-Rama



LOR1602MP3

Computerized Light Controller with MP3 Player

[A Complete Musical Light Show in a Box]

User Manual
October 2, 2007
V1.05

Copyright © Light O Rama, Inc. 2006, 2007, 2008

Table of Contents

Introduction	4
What's in the Box.....	5
Creating a Show (Simple).....	6
Creating a Show (Full Functionality)	7
Power Considerations.....	7
3-Phase Power.....	9
Operating the LOR1602MP3	9
LOR1602W Light Controller.....	10
Safety Considerations	10
Hardware Description	11
Status LED	11
Assigning a Unit ID	11
Stand Alone Speed Control	12
J0 Header	13
Testing with the Hardware Utility	14
Installing LOR Software	14
Connecting Controller-to-PC Data Cable.....	14
Configuring the Communications Port	15
Creating A Sequence	18
Triggering (Starting) a Sequence	23
Power On Mode.....	23
Input Control Mode	23
Stand Alone Operation.....	23
Troubleshooting	25
Autoconfigure does not find COM Port.....	25
Refresh does not find the controller.....	26
LOR1602MP3 Plugged in No Status LEDs Lit .	27
Channel 9-16 OK, Channels 1-8 No Good	27
Specifications and Features.....	28
Warnings and Liability.....	29
Appendix A Hexadecimal to Decimal.....	30

Introduction

The LOR1602MP3 is a LOR1602W 16 channel, 30 amp lighting controller with a DC-MP3 Show Director inside. The DC-MP3 is a powerful show director. It can control a network of Light-O-Rama (LOR) controllers while simultaneously playing MP3 music files. It has a real time clock so shows can be scheduled and six trigger inputs to allow interactive shows using switches and motion detectors.

The unit is simple to operate. Connect your lights to it, insert an SD memory card containing your scheduled show and power it up, no PC is required to play the show and its music.

The DC-MP3 is the smaller circuit board mounted on the metal plate containing the on/off switch. It is covered by a small metal plate labeled "ShowTime MP3 Director." See Figure 1 on the next page.

The LOR1602W lighting controller circuit board is under the metal plate containing the on/off switch. The lighting controller circuit board is the same one sold in the Components line of products as the CTB16D 16 Channel Controlled Triac Board (Deluxe) with heavy duty heat sink.

**For use with incandescent and line
voltage LED strings
Powder coated metal enclosure for
indoor/outdoor use**

What's in the Box

In addition to your LOR1602MP3 “Light Show in a Box” you will also receive the following:

- USB SD card reader/writer
- 128 MB (or larger) SD card
- This LOR1602MP3 user manual
- DC-MP3 user manual

The latest copies of the manuals are available at www.lightorama.com ► *Support* ► *Using the Hardware – Documentation and Firmware* section.

Remove the two screws from the front cover, lift off the cover and refer to the following figure for component locations.

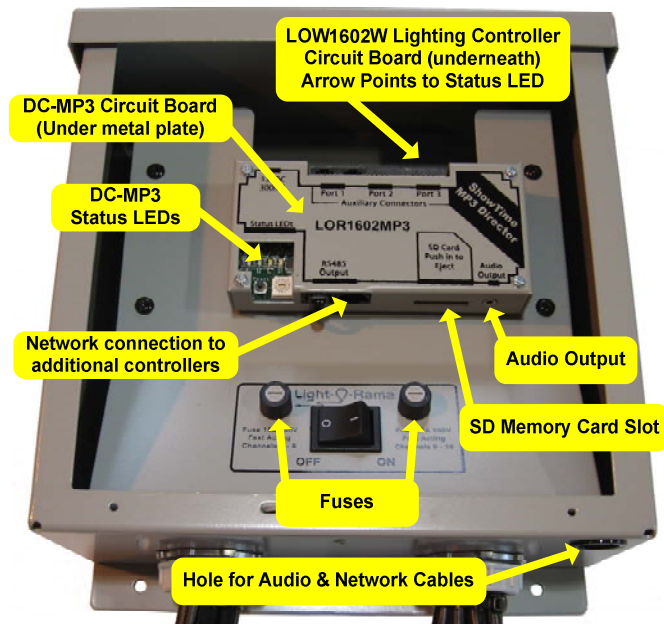


Figure 1

Creating a Show (Simple)

To use the DC-MP3 you must either purchase pre-made musical sequences (light shows choreographed to music) or create your own with the LOR Showtime Windows Software. These sequences are then arranged into a show or shows and placed on an SD memory card.

The simplest way to create a show is to purchase pre-made musical sequences from LOR. These can be purchased in sets on a CD, or individually via download from the LOR website. To see the currently available musical sequences, go to www.lightorama.com ► *Web Store* button (upper right) ► *Musical Sequences* button (left.)

Once you have the sequences you want installed on your PC, the *Simple Show Builder* is the easiest way to arrange, schedule and transfer your show to an SD card.

The *Simple Show Builder* installer can be downloaded from www.lightorama.com ► *Support* ► (bottom of the page) *download* button for *Simple Show Builder*. Run this installer to install the SSB on you PC. Use Windows Explorer to browse to C:\Program Files\Light-O-Rama\LORSimpleShowBuilder.exe and double click it. Follow the instructions on the screen to create your show. In a few simple screens, you will have arranged your musical sequences into a show, scheduled this show and copied it to the SD card. You need only insert the SD card into the LOR1602MP3 and plug in your lights.

Creating a Show (Full Functionality)

To utilize the full functionality of your LOR1602MP3, you will need to use the LOR Hardware Utility to create and manage your shows. Using the Hardware Utility allows you to access the following features not available with *Simple Show Builder*:

- Up to nine different shows on the SD card
- More flexible scheduling
- Interactive shows using one or more of the six input triggers

The DC-MP3 User Manual contains a complete description of how to use these advanced features.

Power Considerations

This section attempts a relatively simple answer to the question “How many lights can I use?”

The LOR1602MP3 has two power input cords, one for channels 1-8 (left channels) and one for channels 9-16 (right channels.) The right cord also powers the controller’s microcomputers.

If you plug both power cords into one circuit, then the controller would have at most 20 amps available, but more likely, the circuit is a 15 amp circuit, so that’s all you’ll have available.

If you can plug the two power cords into separate circuits, then the full 30 amp capacity of the controller will be available.

We will talk about only the right channels for now. The same discussion applies to the left channels.

The maximum current on a single channel is 8 amps. The maximum current for all right channels is 15 amps. So you have to divide up your lights on the 8 channels so you don’t exceed these two limits. You could put 1 amp on 7 channels and 8 amps on the last one and that would be 15 amps. Or, you could put 2 amps on 6 channels, 1 amp on another channel and 2 amps on the last channel and that would be 15 amps.

The following table gives the approximate current consumption for various types of Christmas lights.

Description	Lights/string	Amps/string
Mini-lights	50	0.17
Mini-lights	100	0.33
C7 bulbs	25	1.04
C9 bulbs	25	1.5
100 watt bulb	1	0.75
150 floodlight	1	1.25
LED mini-lights	70	0.03
LED C6 or C7	25	0.02

If you put six sets of 100 mini-lights on one channel, that would be $6 * 0.33 =$ about 2 amps. If you put six sets of 70 LED mini-lights on one channel, that would be $6 * 0.03 =$ about 0.18 amps. You can see that you can get a lot of LEDs with very little power.

Make a chart of all the lights you want to connect to the controller’s channels and then work out the numbers to see if you hit any limits. You don’t want more than 8 amps on any one channel, and all

LOR1602MP3

eight channel in the bank must not add up to more than 15 amps.

The same computation applies to the left bank of channels. Remember, if the controller is plugged into only one circuit in your house, then both the left and right banks' total current must not exceed what that circuit can supply.

3-Phase Power

Both power cords must be plugged into the same phase in 3-phase environments. If they are not, channels 1-8 will not be flashing in sync with the Show Director or PC.

Operating the LOR1602MP3

This section assumes you have created an SD card with your show(s) and schedule(s) on it. You will have to open the LOR1602MP3 by removing the two big screws from the cover plate, see Figure 1.

First, attach your lights to the 16 pig tails. There is a video available on the LOR Musical Sequences page that explains how to lay out the 16 channels' lights so that your display will look good with our pre-made musical sequences. You can view the video at www.lightorama.com ► *Web Store* button (upper right) ► *Musical Sequences* button (left.) ► *16 Channel Setup Instructions* button.

Second, plug your amplified speakers and/or FM transmitter into the "Audio Output" mini-jack on the ShowTime MP3 Director. Use the small hole at the bottom of the LOR1602MP3 for the audio cable.

Third, plug in both of your controller's power plugs.

LOR1602MP3

Fourth, push the SD card into the ShowTime MP3 Director.

Finally, turn on the LOR1602MP3 power switch. Your show will start in about 5 seconds or when it is scheduled.

LOR1602W Light Controller

Your LOR1602MP3 is an LOR1602W lighting controller with an internal DC-MP3 Show Director. This section of the manual describes the lighting controller portion of your LOR1602MP3. How to configure it, how to control it from a PC and its specifications.

Safety Considerations

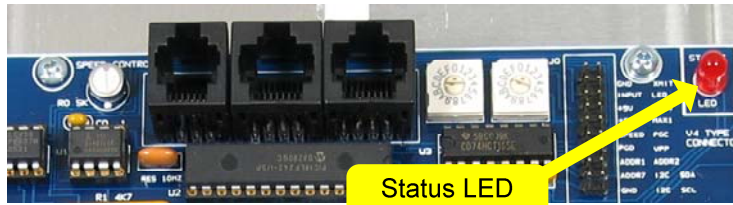
The metal enclosure is water resistant provided that the LOR1602W is mounted with the wires pointing downward. The pigtail outlets must be at least one foot off the ground. Keep the unit away from heavy water splashing and forced water flows such as from irrigation sprinklers.

Anchor communication cables using wire ties to a stable point such as the top mounting tab. Place a small piece of duct tap over the hole in the bottom of the unit once communication cables have been installed. Do not seal entire unit with tape. It needs to breath.

To connect the communications link and to set the Unit ID, you must remove the cover. Make sure that the unit is not plugged in or be very careful when removing the cover, replacing the cover or when reaching into the unit.

Hardware Description

Status LED



LED blinking approximately twice/second:

Controller has booted correctly and is waiting for commands. The controller is not connected to a Light O Rama network or the network is not active.

LED is on solid: Controller is connected to an active network (is receiving the heartbeat and commands from a PC, a Show Director or another controller)

LED blinks on for a long pulse and off for a short pulse: Controller firmware needs to be downloaded. See the *Updating Controller Firmware* section.

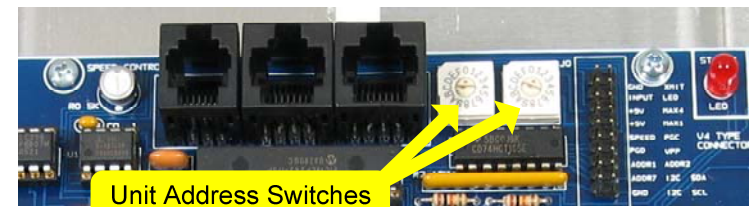
LED flutters: Controller is running a standalone sequence or downloading firmware.

Assigning a Unit ID

Each LOR light controller used in a network must have a unique ID assigned. [If two controllers are given the same unit ID, then they will both perform the same effects.] Every channel that you control in a sequence (Set of lighting controller commands constructed using the Showtime Windows software) has to identify a particular channel on a particular lighting controller (Unit.)

For example, in a sequence that you construct, channel 32 may be assigned to Unit ID 03 circuit 10. Because the controllers are daisy chained together, every controller sees every command sent but Unit 03 will only react to commands that are marked “for Unit 03.”

The two hexadecimally rotary dip switches (shown in the next picture) are used to set a controller’s Unit ID. Valid Unit ID values are 01 to F0 (1 to 240 decimal) 00 is not a valid Unit ID.



To set the Unit ID to '01,' the left rotary switch would be set to '0' and the right rotary switch would be set to '1.'

See Appendix A for a conversion of Hexadecimal controller unit IDs set with the Unit ID Switches and their decimal equivalents.

Stand Alone Speed Control

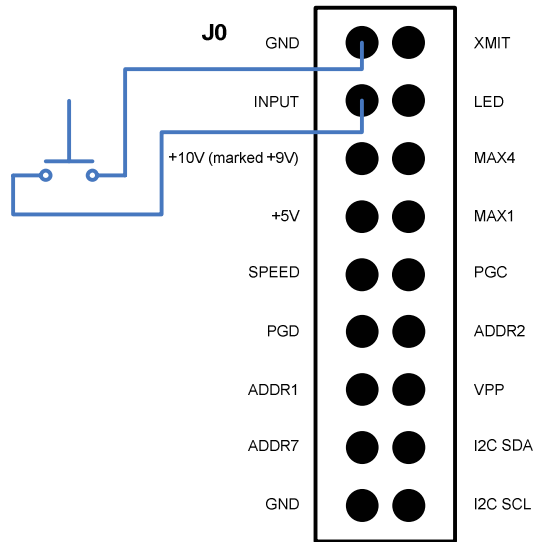


This little potentiometer allows you to adjust the speed at which a standalone sequence is executed. In the center position the sequence will execute at the rate specified in the sequence. That is 1 second

in the sequence will take 1 second to execute. The sequence may pause slightly when adjusting the speed. This is normal.

A standalone sequence is a sequence that has been downloaded into the flash memory of the lighting controller. See the *Stand Alone Operation* section for more information.

J0 Header



This figure shows the J0 header that is to the right of the Unit ID Switches. Normally, you would not connect anything to this header, however, for standalone operation the figure shows how to connect a switch to the controller. This switch could be used to start a stand alone sequence. See the *Stand Alone Operation* section for more information.

Testing with the Hardware Utility

Use this section to learn how to connect your controller to your PC. If you have already installed the RS485 adapter and verified its operation with another controller, you can skip to the *Creating A Sequence* section.

Once AC power has been supplied to the LOR1602W the Status LED will begin to blink. This indicates that the Unit is functioning and that there is no communication. Once communication with a PC, Show Director or another controller is established, the LED will light steadily.

Installing LOR Software

You must have the LOR ShowTime software for you PC to proceed. Follow the instructions that came with the software to install it on your PC.

Connecting Controller-to-PC Data Cable

If you want to experiment with the lighting controller in your LOR1602MP3 using the LOR Windows Software, you will have to install an RS485 adapter so you can talk to it from your PC.

When controlling the LOR1602MP3 from your PC, make sure there is no SD card in the DC-MP3 Show Director. Otherwise both the Show Director and the PC may try to talk to the controller simultaneously. This will garble the commands.

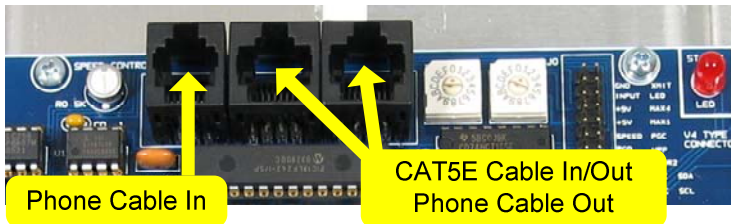
If you have an SC485 (PC serial port adapter, shown on the left in the following picture), you need only plug it into an available PC 9-pin serial port. The cable from this serial adapter to the controller is limited to 100' or less.

LOR1602MP3



If you have one of the USB adapters (shown in the previous picture on the center and right), follow the installation instructions that came with the adapter to install it.

If you are using telephone cable to connect your controller to the RS485 adapter, plug one end of the phone cable into the adapter and the other end of the cable into the Phone Cable In jack as indicated in the next picture.



If you are using CAT5E LAN cable to connect your controller to the RS485 adapter, plug one end of the data cable into the adapter and the other end into either of the *CAT5E Cable In/Out* jacks shown in the previous picture.

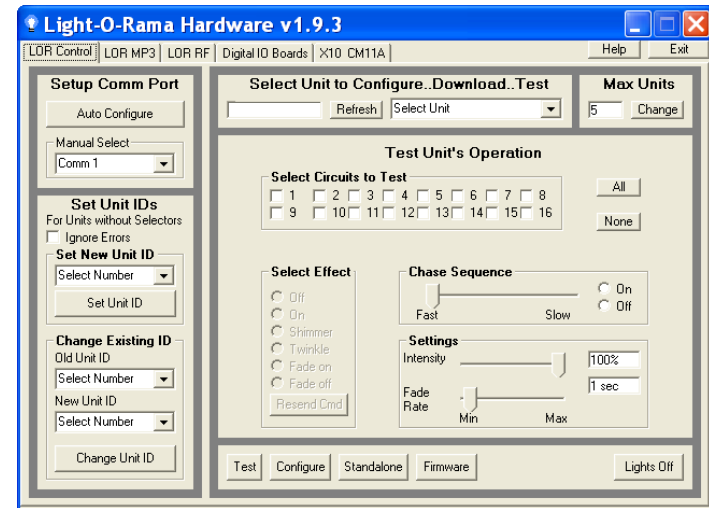
Configuring the Communications Port

First start the Showtime software control panel by clicking **start** ► **All Programs** ► **LightORama** ► **Light-O-Rama Control Panel**. There will be a light bulb with a blue halo on the right side of the task

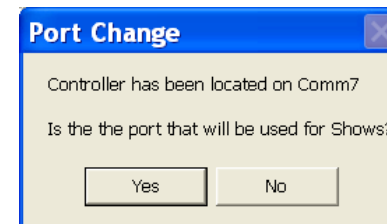
LOR1602MP3

bar at the bottom of the screen. Right-click the light bulb and select *Hardware Utility* from the menu.

Make sure the *LOR Control* tab is selected. You will see this window:



With your controller powered up and cabled to your PC, click the *Auto Configure* button on the top left. The Hardware Utility will pop up a window asking you to make sure everything is connected, click OK. It will then search through all ports on your PC looking for the port being used by Light O Rama and you will see this window:



Click **Yes**, your RS485 adapter has been located and is functioning properly. This will also make this port available to other LOR software, like the

Sequence Editor which is used to create your light shows. See the *Troubleshooting* section if you have problems.

TIP: The **REFRESH** command can take a long time scanning for all possibly Unit IDs. To speed things up, set the *Max Units* (upper right of window) to a number slightly larger than the maximum Unit ID you plan on using. See Appendix A if you have Unit IDs above 09 to convert hexadecimal to decimal.

Click the *Refresh* button (center top of window) to have the Hardware Utility search for all controllers attached to the PC. When it finishes, the drop down menu to the right of the *Refresh* button will list all controllers found. Use this menu to select your controller. See the *Troubleshooting* section if you have problems.

You can use the “Test Unit’s Operation” portion of the window to test the controller. Make sure you have some lights plugged into the controller and then click the radio buttons under “Select Effect.”

This is a good time to experiment with different intensities, fade rates and chase speeds. This information will be useful if you want to create your own light shows.

Creating A Sequence

This section assumes that you have used previous sections to configure your controller and attach it to your PC. If you haven’t done this, see the *Assigning a Unit ID* and *Testing with the Hardware Utility* sections.

The following screen shot is for later reference, it shows the Sequence Editor with the completed test sequence and labels for the functions used.

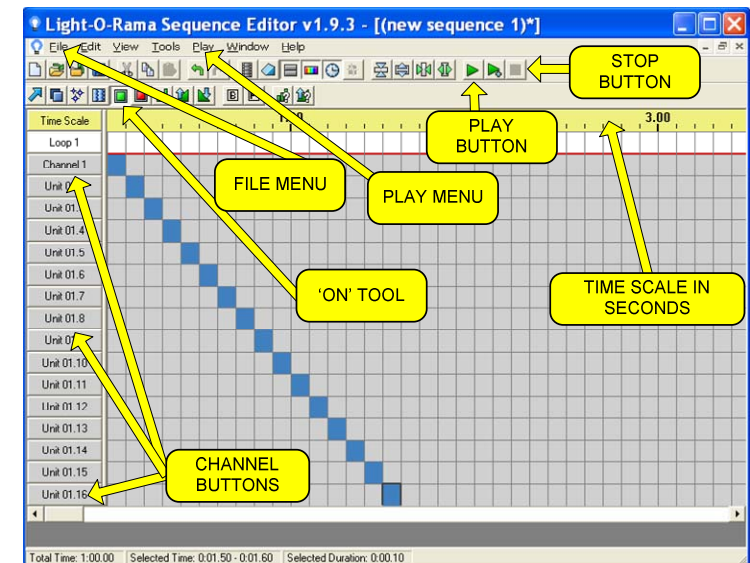
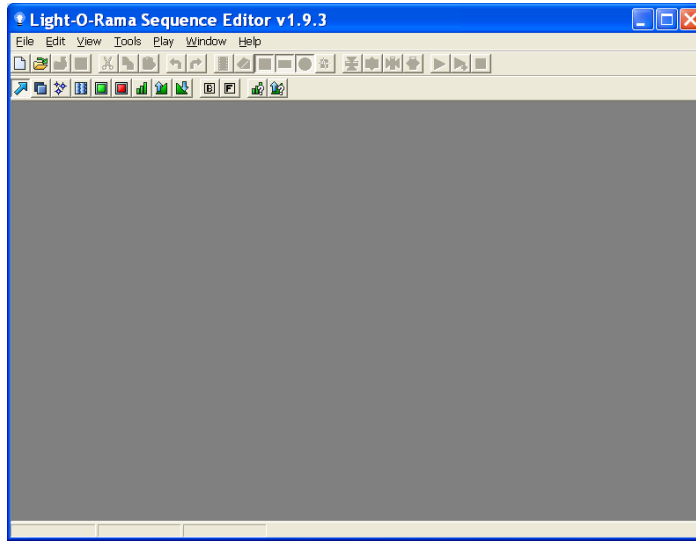


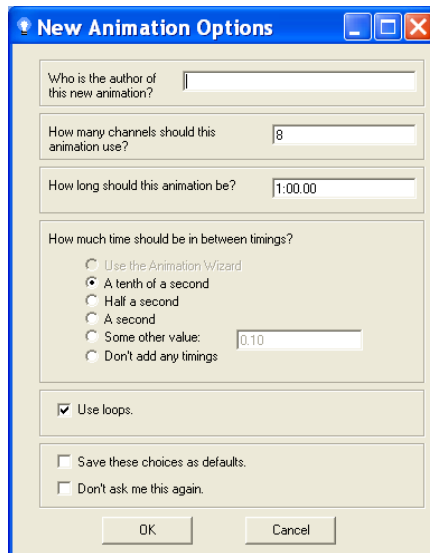
Figure 2

First start the Showtime software control panel if it is not already running by clicking **start ► All Programs ► LightORama ► Light-O-Rama Control Panel**. There will be a light bulb with a blue halo on the right side of the task bar at the bottom of the screen. Stop the Hardware Utility if it is running because only one LOR program may use

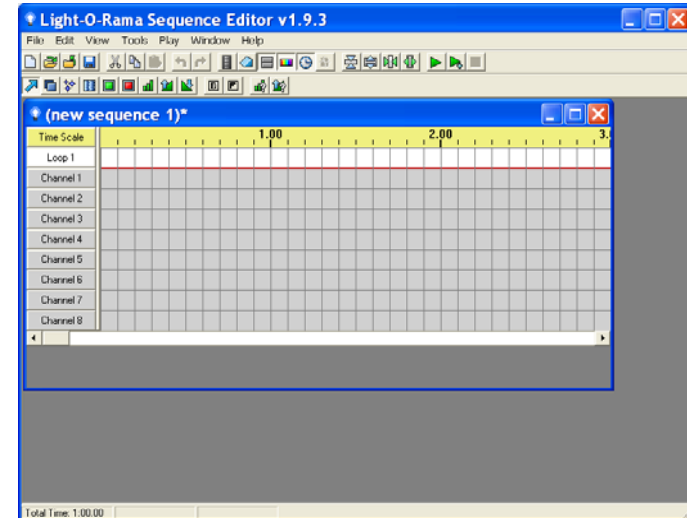
the communications port at a time. Right-click the light bulb and select *Sequence Editor* from the menu and you will see this window:



Click **File ► New ► Animation Sequence** and you will see this window:



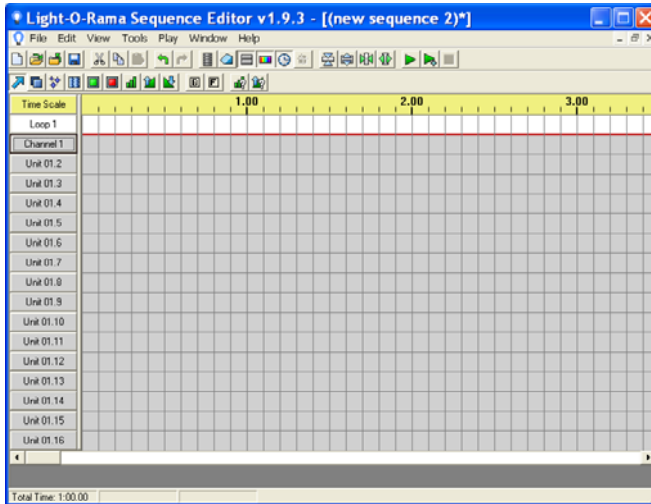
Set the number of channels to 16, the rest of the options can be left as is and click OK. You will see this window:



Click the *Channel 1* button (on the left of the window.) In the *Channel Settings* window that pops up use the “Device Type” drop down menu to select “Light-O-Rama” controller. Set the Unit to ‘01’ (or the Unit ID of your controller if different) and set the Circuit to 1. Circuit number 1 corresponds to Output Circuit 1 on the controller. When you click OK, the *Autopopulate* box will appear, use the drop down menu in the box to select “Sixteen Channels” and click OK.

You can also configure each channel individually by clicking its channel button and setting its device type, unit ID and circuit number.

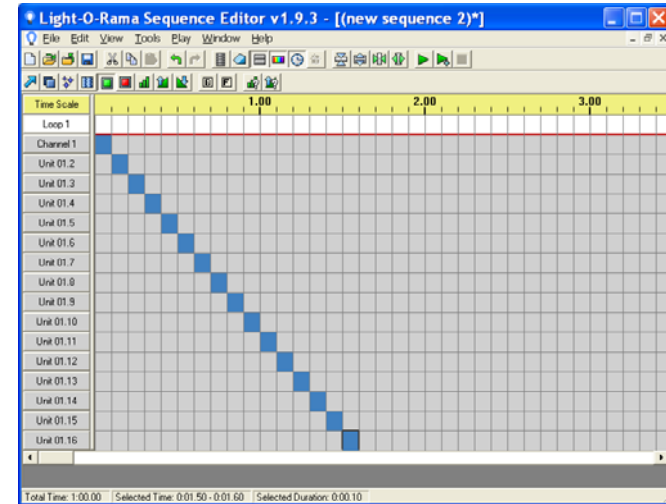
You now have a blank sequence grid with the channels configured. Click the sequence grid maximize button to expand the grid and it will look like this:



The rows in this grid represent the circuits on the lighting controller. The “Channel 1” row is circuit 1, “Unit 01.2” is circuit 2, ... If you look at the output pigtailed on the controller, you will see small number bands on each socket – these correspond to the grid rows now.

The columns in the grid represent time increasing to the right.

Click the ‘on’ tool. It is in the effects tool bar which is just above the row labeled “Time Scale.” (Refer back to Figure 2) The ‘on’ tool is the square green button. If you click it and then click in the grid, it will turn ‘on’ the lights for those circuits at the times you click. In the following example, I have clicked to turn each light on in sequence for a 10th of a second during the first 1.6 seconds of the sequence.



In the top tool bar, make sure *Control Lights* in the *Play* menu is checked. (Refer back to Figure 2)

Clicking the green play arrow (button) in the second tool bar will run your sequence. The red box to the right of the arrow is the stop button. If you have lights plugged into the controller, this simple sequence will light them in circuit order. You have created your first sequence.

There are Quick Start Guides for creating animation (non-musical) and musical sequences, Flash Tutorials on this subject and much more at:

www.lightorama.com ► **Support**

The following Wiki is also an excellent source of information on all things Light-O-Rama:

www.lorwiki.com

There is a very active and helpful group of people on the Light O Rama bulletin board:

<http://lightorama.mywowbb.com>

There is also a very active and helpful user community on the Planet Christmas bulletin board::

www.planetchristmas.com

Triggering (Starting) a Sequence

In the *Hardware Utility*, when you download a stand alone sequence, you can specify what trigger condition will be used to start that sequence. A stand alone sequence can be triggered one of two ways: *Power on* and *Input Control*.

Power On Mode

This means that the sequence will run anytime that power is supplied to the controller. You plug it in and it plays until you unplug it.

Input Control Mode

This uses the input pin on the controller to determine when the sequence will run. When the input pin is connected to the ground pin the sequence will run one time and then check to see if the pin is connected to ground. For more information on trigger conditions see the help for the *Hardware Utility*.

For information on how to connect the switch to the controller, see the *J0 Header* section.

Stand Alone Operation

An animation sequence (sequence with no accompanying audio) can be downloaded in the LOR1602W. This is different from sequences run by the LOR1602MP3's DC-MP3. A stand alone sequence is loaded into the flash memory of the

lighting controller's microprocessor, not stored on an SD card read by the DC-MP3's microprocessor.

This sequence can contain approximately 5,000 commands. These commands can also be for controllers other than this controller, so this controller can direct a network of controllers. There is no restriction on the types of LOR controllers in this network.

The sequence is designed and tested using the Showtime Software Sequence Editor. When you are happy with the sequence, save it and stop the Sequence Editor.

Start the *Hardware Utility* and click the *Refresh* button to find the LOR1602W. Use the drop down menu next to the *Refresh* button to select the controller.

Click the *Standalone* button at the bottom of the window. Select one of "Run when power is on," "Input (norm open switch)" or "Input (norm closed switch.)" Click the *Send Trigger info to Unit* button.

Finally, Use the *Open* button to browse to your sequence and click the *Download* button.

You also use this screen to remove downloaded standalone sequences. You can also remove a standalone sequence by turning the controller off, setting the Unit ID switches to '00' and turning it on for 10 seconds. Then turn it off and reset the Unit ID switches to the original value.

Troubleshooting

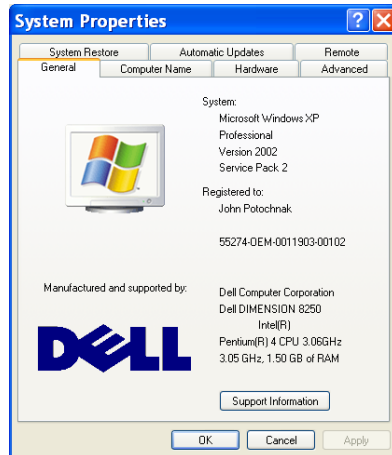
Autoconfigure does not find COM Port

If the automatic method of determining the communication port used by LOR does not work, you may be able to locate the port and select it manually.

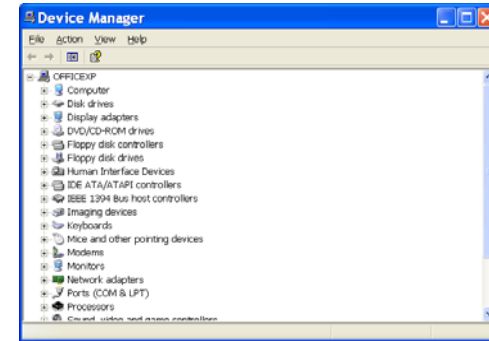
If you have an SC485 serial port RS485 adapter, you will have to examine the connection on your computer or consult the owner's manual to determine which port it is plugged into. It is usually Comm 1 or Comm 2.

If you have a USB485 or USB485B serial port adapter, use the following procedure to find the communications port.

Click **start ► My Computer ► View System Information** and you should see a System Properties window like this one:



Click the *Hardware* tab and then the *Device Manager* button. You should see a *Device Manager* window like this one:



Scroll down and expand "Ports (COM & LPT)." You should see a "USB Serial Port (COMn)." This is your LOR communications port. Use the *Manual Select* drop down menu in the Hardware Utility to select this port. Proceed with your testing.

Refresh does not find the controller

You have previously: successfully configured the comm port, manually selected the comm port or used another controller to Autoconfigure the comm port. In other words, you're sure the RS485 adapter has been properly installed and is working. If this is not the case, consult the *Configuring the Communications Port* section.

When the controller is powered up but no data cable is connected to it, the Status LED on the larger, lower circuit board should be blinking. This means that the controller is working, but is not in communication with a Show Director or PC. If the Hardware Utility is running, the RS485 adapter is properly configured and you attach a cable from the RS485 adapter to the controller, this Status LED

should be steady on. If this is not the case, then either the RS485 adapter is not properly installed, the Hardware Utility is not running or some component is broken.

If the light does go steady on, then manually type the controller Unit ID in hex into the box to the right of the *Refresh* button in the Hardware Utility. Connect some lights to the controller and try clicking the 'On' radio button in the "Test Unit's Operation" section. If the lights come on, your controller is working. If no good at this point, contact LOR support.

LOR1602MP3 Plugged in No Status LEDs Lit

If you take your LOR1602MP3, remove the top cover, plug in both power cords and turn on the power switch, there should be a red LED blinking on the upper and lower circuit boards. There should also be a green LED lit on the upper board. If this is not the case, check the outlet for power with a lamp that is known to be working. Check the right fuse (refer to Figure 1) and replace if bad.

Channel 9-16 OK, Channels 1-8 No Good

Channels 1-8 don't work: Make sure the left power cord is plugged into a working outlet – test it with a known good lamp. Check the left fuse (refer to Figure 1) and replace if bad.

Specifications and Features

Specifications	Features
<ul style="list-style-type: none"> • Channel Capacity: 8 amps per channel (16 amp triacs are used.) • Controller Capacity: LOR1602W is 30 amps • Isolation: Opto isolators are used to isolate high and low voltage sides. Triacs are isolated. Parts are UL listed. • Supply Voltage: 120VAC 50/60Hz • Power Connections: NEMA 5-15P NEMA 5-15R • Control Input: RS485 via RJ45 or RJ11 jacks • Dimensions: 10³/₄"w x 12"h x 4³/₄"d 	<ul style="list-style-type: none"> • Director: Unit can control other units as well as its own 16 channels. • Input: Unit can monitor inputs to start a sequence • Unit IDs: Up to 240 controllers. Up to 3,840 channels. • Fading: 256 levels used for smooth fading effects. Fades from 0.1 to 25 seconds. • Dimming: 100 levels (0%...100%) • Effects: Ramp, Fade, Intensity, Flicker, Shimmer • Sequences: Multiple internal sequences • Presets: High-burn and low-burn settings.

Warnings and Liability

WARNING: The LOR1602MP3 can pose a dangerous electrical hazard if not used properly. Care should be taken to keep the inside of the LOR1602MP3 dry. When the LOR1602MP3 is directly connected to a PC via one of the RS485 adaptors, there is a direct electrical connection between the low voltage logic side of the LOR1602MP3 and the PC. If the LOR1602MP3 is physically damaged causing traces to short or the device is allowed to get wet either through direct contact with water or condensation, the logic side of the LOR1602MP3 can receive direct 120VAC. In that case damage to any connected hardware such as a PC can occur.

IN NO EVENT SHALL BUYER BE ENTITLED TO INCIDENTAL, CONSEQUENTIAL, OR SPECIAL DAMAGES, NOR SHALL LIGHT-O-RAMA'S LIABILITY EXCEED THE PURCHASE PRICE OF THE GOODS.

Appendix A Hexadecimal to Decimal

Hex	Dec	Hex	Dec	Hex	Dec	Hex	Dec
01	01	3D	61	79	121	B5	181
02	02	3E	62	7A	122	B6	182
03	03	3F	63	7B	123	B7	183
04	04	40	64	7C	124	B8	184
05	05	41	65	7D	125	B9	185
06	06	42	66	7E	126	BA	186
07	07	43	67	7F	127	BB	187
08	08	44	68	80	128	BC	188
09	09	45	69	81	129	BD	189
0A	10	46	70	82	130	BE	190
0B	11	47	72	83	131	BF	191
0C	12	48	72	84	132	C0	192
0D	13	49	73	85	133	C1	193
0E	14	4A	74	86	134	C2	194
0F	15	4B	75	87	135	C3	195
10	16	4C	76	88	136	C4	196
11	17	4D	77	89	137	C5	197
12	18	4E	78	8A	138	C6	198
13	19	4F	79	8B	139	C7	199
14	20	50	80	8C	140	C8	200
15	21	51	81	8D	141	C9	201
16	22	52	82	8E	142	CA	202
17	23	53	83	9F	143	CB	203
18	24	54	84	90	144	CC	204
19	25	55	85	91	145	CD	205
1A	26	56	86	92	146	CE	206
1B	27	57	87	93	147	CF	207
1C	28	58	88	94	147	D0	208
1D	29	59	89	95	147	D1	209

LOR1602MP3

1E	30	5A	90	96	150	D2	210
1F	31	5B	91	97	151	D3	211
20	32	5C	92	98	152	D4	212
21	33	5D	93	99	153	D5	213
22	34	5E	94	9A	154	D6	214
23	35	5F	95	9B	155	D7	215
24	36	60	96	9C	156	D8	216
25	37	61	97	9D	157	D9	217
26	38	62	98	9E	158	DA	218
27	39	63	99	9F	159	DB	219
28	40	64	100	A0	160	DC	220
29	41	65	101	A1	161	DD	221
2A	42	66	102	A2	162	DE	222
2B	43	67	103	A3	163	DF	223
2C	44	68	104	A4	164	E0	224
2D	45	69	105	A5	165	E1	225
2E	46	6A	106	A6	166	E2	226
2F	47	6B	107	A7	167	E3	227
30	48	6C	108	A8	168	E4	228
31	49	6D	109	A9	168	E5	229
32	50	6E	110	AA	170	E6	230
33	51	6F	111	AB	171	E7	231
34	52	70	112	AC	172	E8	232
35	53	71	113	AD	173	E9	233
36	54	72	114	AE	174	EA	234
37	55	73	115	AF	175	EB	235
38	56	74	116	B0	176	EC	236
39	57	75	117	B1	177	ED	237
3A	58	76	118	B2	178	EE	238
3B	59	77	119	B3	179	EF	239
3C	60	78	120	B4	180	F0	240

Light-O-Rama, Inc.
 Tel: (518) 539-9000
 Fax: (518) 538-0067
 info@lightorama.com