

Light-O-Rama

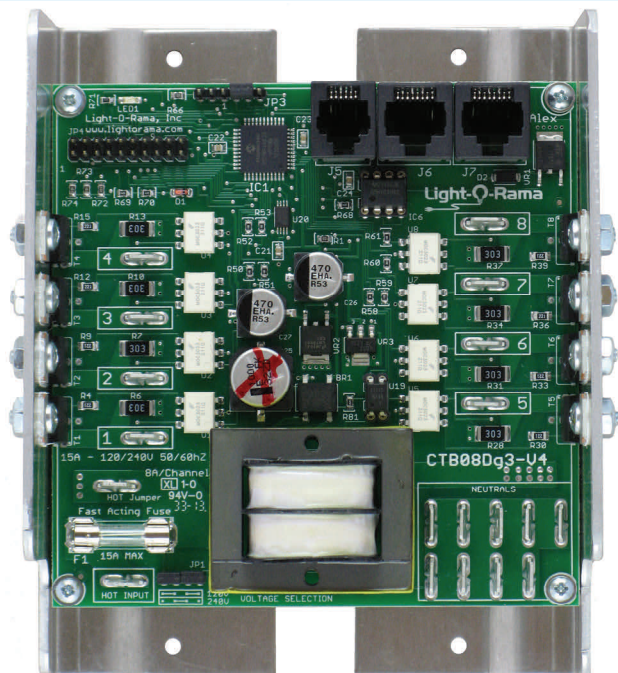


CTB08Dg3

Component Eight Channel Lighting Controller

www.lightorama.com

- Assembled, full function, lighting controller for commercial and hobbyist users wanting to control incandescent and LED lighting
- 8 independent high-power channels
- Effects include on, off, fade up, fade down, intensity, twinkle and shimmer
- Can be directed by your PC using the ShowTime Windows Software, a Light-O-Rama MP3 Director, a deluxe Light-O-Rama lighting controller, or a standalone internal control sequence
- Up to 240 controllers (3,840 channels) in a network
- Automatically recognizes DMX protocol
- 1024 levels for smooth fading with durations from 0.1 to 25 seconds
- Settable high burn (to extend lamp life) and low burn (to reduce lamp shock)
- Includes lighting curves and “phantom loads” to permit smoother fading of LED light strings
- Includes three trigger inputs for interactive shows
- Used in the LOR800Wg3 Showtime lighting controller



CTB08Dg3 shown with Heat Sinks

The CTB08Dg3 is an economical choice for a microprocessor controlled light-controller. It supports all of the lighting effects of our ShowTime product line.

The microprocessor performs the lighting effects from high level commands, for example: fade channel 12 from 20% intensity to 60% intensity over six seconds. This internal intelligence allows for very complex shows where thousands of changes in the lights are possible every second.

Using the MP3 Director or the ShowTime Windows PC software, the display can be choreographed to music.

A network of controllers allows animation of displays requiring high power and/or hundreds or even thousands of channels.

Easy to use software with powerful wizards facilitates the building of sophisticated lighting sequences choreographed to music and the assembly of these sequences into shows. The only limit is your imagination.

Specifications	
Configuration	One banks of 8 channels
Individual Channel Capacity	1 amp—no Heat Sinks (HS) 8 amps—regular HS
Board Capacity—regular heat sinks	20 amps
Supply Voltage	120 VAC 60 Hz
Line voltage Isolation	Optos isolate control logic
Power Connections	¼" Quick connects (spade lugs)
Control In/Out	RS485 via RJ45 or RJ11
No heat sinks	6 ¾" w x 5 ¼" h x 1 ½" d
Regular heat sinks	7 ¼" w x 6 ¾" h x 2 ¼" d

Light-O-Rama, Inc.

Tel: (518) 539-9000 Fax: (518) 538-0067

info@lightorama.com