

# Light-O-Rama

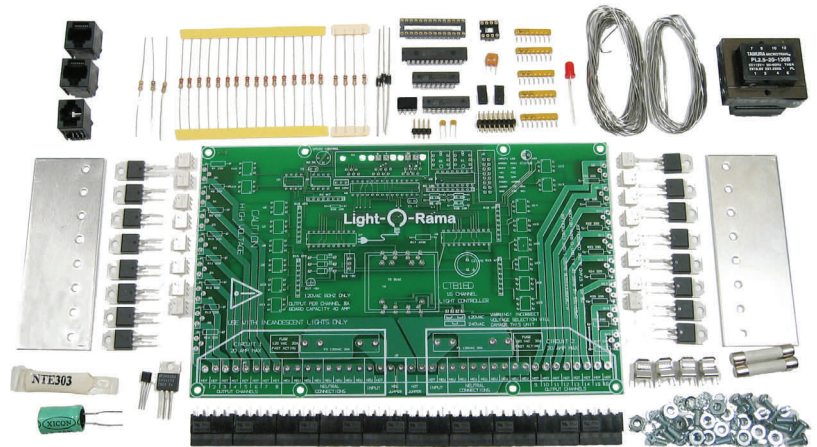


## CTB-16K

Hobbyist  
Sixteen Channel  
Deluxe Lighting Controller Kit

[www.lightorama.com](http://www.lightorama.com)

- Microprocessor pre-programmed for Light-O-Rama Protocol and fully field upgradeable for future compatibility
- 16 independent high-power channels
- Effects include on, off, fade, intensity, twinkle and shimmer
- 100 intensity levels for dimming
- 256 levels for smooth fading with durations from 0.1 to 25 seconds
- Can be directed by the MP3 Director, another controller or by the ShowTime Windows Software
- Up to 240 controllers (3,840 channels) in a network
- Settable high burn (to extend lamp life) and low burn (to reduce lamp shock)
- Option 1: Regular heat sinks
- Option 2: Deluxe Upgrade  
Unit address switches  
Standalone sequence support  
Standalone sequence speed control



### Standard Kit with Light Duty Heat Sinks

These kits contain everything you need to build a fully functional Light-O-Rama lighting controller, even the solder. All you need are a few tools, some time and patience.

A person with experience building simple electronics kits should have no problem assembling this kit in about three hours. A detailed manual with step-by-step instructions and building tips leads you through the assembly process.

You check off each step as you go. Check out the manual on the [www.lightorama.com](http://www.lightorama.com) support page.

The CTB-16K is a microprocessor controlled light-controller with the same functionality as our Component and ShowTime product lines. Its internal intelligence allows for thousands of commands to be processed every second.

A network of controllers allows animation of displays requiring high power and/or hundreds or even thousands of channels.

Easy to use software with powerful wizards facilitates the building of sophisticated lighting sequences choreographed to music and the assembly of the sequences into shows.

The only limit is your imagination.

Light-O-Rama, Inc.  
Tel: (518) 539-9000 Fax: (518) 538-0067  
[info@lightorama.com](mailto:info@lightorama.com)

### General Specifications

Configuration	Two banks of 8 channels
Supply Voltage	120/240 VAC 50/60Hz
Isolation	Optos isolate line voltage from control logic
Power connections	Terminal strips accepting 20 amp 12AWG wire
Control in/out	RS485 via RJ45 or RJ11
Size with Regular Heat Sinks	9"w x 7 5/8"h x 2 1/8"d

Current Handling Capacity	Light Duty Heat Sinks	Regular Heat Sinks
Individual Channel	7.5 amps	8 amps
Individual Bank	7.5 amps	20 amps
Board	15 amps	40 amps