

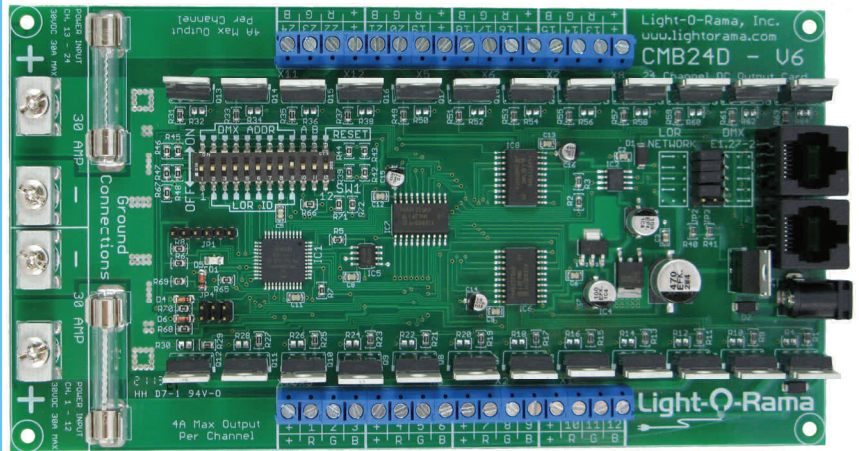
Light-O-Rama

CMB24D

Component Twenty-four Channel Deluxe DC Controller

www.lightorama.com

- 60 amp DC controller with 24 independent 4 amp channels
- All Light-O-Rama effects supported
- Three trigger inputs
- Storage for an internal standalone sequence (approx 10,000 commands)
- Can direct itself and a network of Light-O-Rama controllers
- Can be directed by a Show Director, another controller or by the ShowTime Windows Software
- Can monitor an input to start the internal standalone sequence
- Up to 240 controllers (3,840 channels) in a network
- RJ45 network jacks can be jumpered for LOR or DMX (E1.27) wiring
- 256 levels for smooth fading with durations from 0.1 to 25 seconds
- Each 12 channel bank can handle a different DC voltage between 5 & 30V
- Unit address switches to set LOR or DMX network address
- Power supply for accessories



The CMB24D is a microprocessor controlled DC voltage controller. This deluxe controller takes its commands from an internal stored sequence, another controller, a Light-O-Rama Show Director, the Light-O-Rama ShowTime Windows PC software or DMX.

The CMB24D supports interactive shows via three inputs activated by simple switch closures. One input can be used to start/stop an internal stand-alone sequence.

The RJ45 jacks on the CMB24D can be jumpered to support LOR networking or a standard DMX E1.27 network. Screw terminals permit easy connection of loads.

The microprocessor performs the lighting effects from high level commands, for example: fade channel 12 from 20% intensity to 60% intensity over six seconds. This internal intelligence allows for very complex shows where thousands of changes in the lights are possible every second.

Using a Show Director or the ShowTime Windows PC software, the display can be choreographed to music.

A network of controllers allows animation of displays requiring high power and/or hundreds or even thousands of channels.

Easy to use software with powerful wizards facilitates the building of sophisticated lighting sequences choreographed to music and the assembly of the sequences into shows.

Specifications

Configuration	Two banks of 12 channels
Individual channel capacity	4 amps
Individual bank capacity	30 amps
Logic power supply voltage	12 volts DC (not needed if chans 1-12 input >= 12 V)
Switched voltage	5 to 30VDC
Power connections	Screw terminal strips
Control In/Out	RS485 via RJ45
Without heat sinks	7¼" w x 4" h

Imagine it, then do it

Light-O-Rama, Inc.
Tel: 518-539-9000 Fax: 518-538-0067
info@lightorama.com